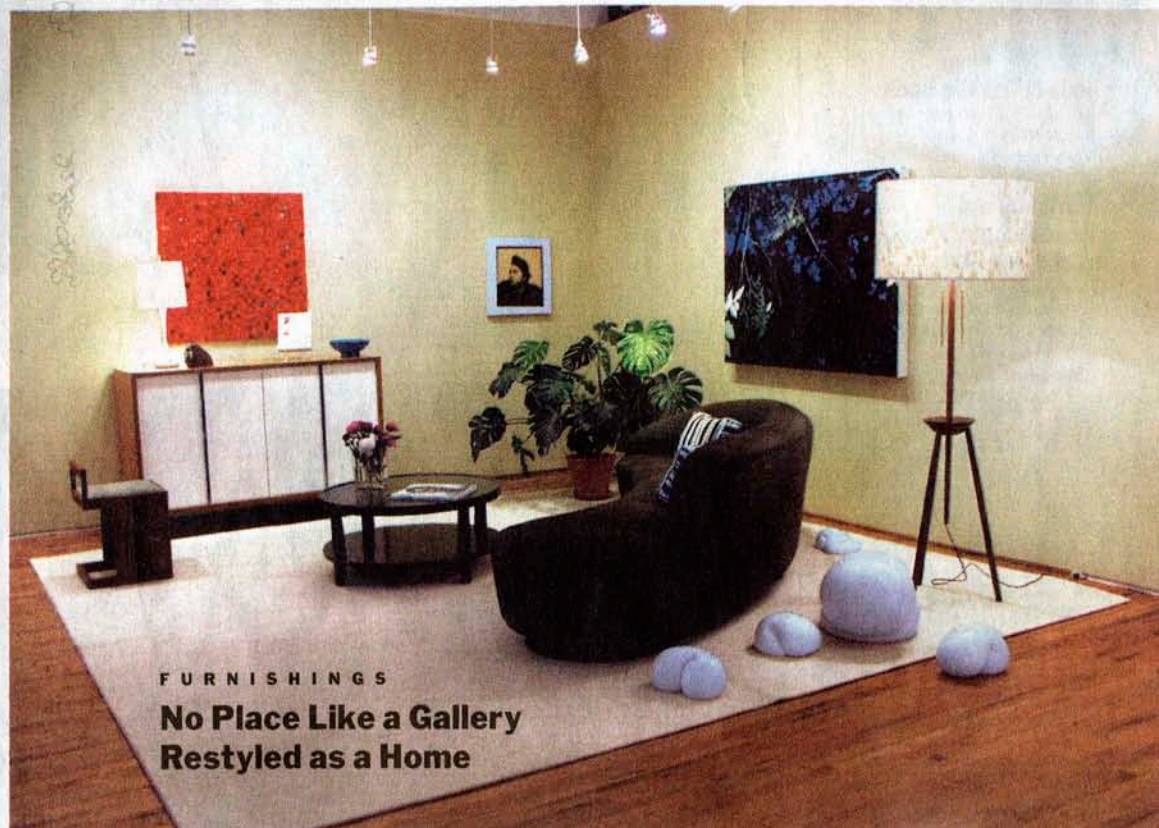


HOUSE & HOME

The New York Times

CURRENTS

Craig Kellogg



FURNISHINGS
**No Place Like a Gallery
Restyled as a Home**



Photographs by Meg Henson for The New York Times

It's a show house. It's a gallery. It's a show house in a gallery. Margaret Thatcher (not that one — the one at Margaret Thatcher Projects in New York) invited Gregory Dufner, seated right, and Daniel Heighes Wismer, standing, of the architectural firm of Dufner Heighes to do an installation called "Arthouse." And so they restyled her gallery as a luxury loft apartment, above.

Forest green Ultrasuede was used to upholster the Kagan Serpentine sofa, from Ralph Pucci International (\$12,000 at retail). The ribbed ivory wool industrial carpet (\$3,000) is four pieces, seamed and bound by A. M. Collections. The Lake Michigan coffee table in lacquered maple (\$2,200) and the cubistic stool of Honduran rosewood (\$2,100) are Dufner Heighes designs built by a wood shop in Red Hook, Brooklyn, and available by special order.



The Army-drab alcove, above right, is brightened with ceramic blossoms by Nancy Baum, an artist (\$6,000 for four). The designers' walnut table has a Corian top. Dufner Heighes added a silk shade to the Italian crystal chandelier, and a dealer lent the vintage Brown Jordan patio chairs by Walter Lamb (\$13,000 for four).

The J bedside table (left, \$1,100) is another Dufner Heighes signature design. The table lamp on it is among the many props from the designers' actual apartment. The lamp is one of a pair (\$800) from their vast personal collection. "Those did not come from our bedroom and are definitely for sale," Mr. Wismer said. "Arthouse" will be open through Aug. 7 at 511 West 25th Street; (212) 675-0222; www.thatcherprojects.com. Dufner Heighes is at www.dufnerheighes.com.; (212) 420-1605.